

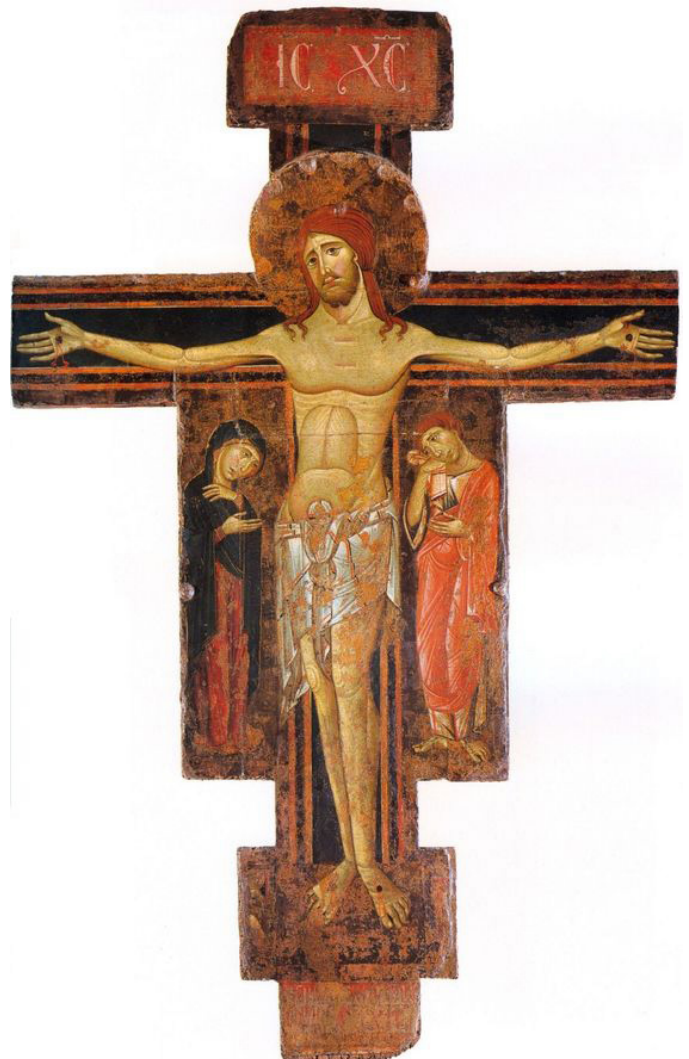
St. Thomas Aquinas Crucifix Update

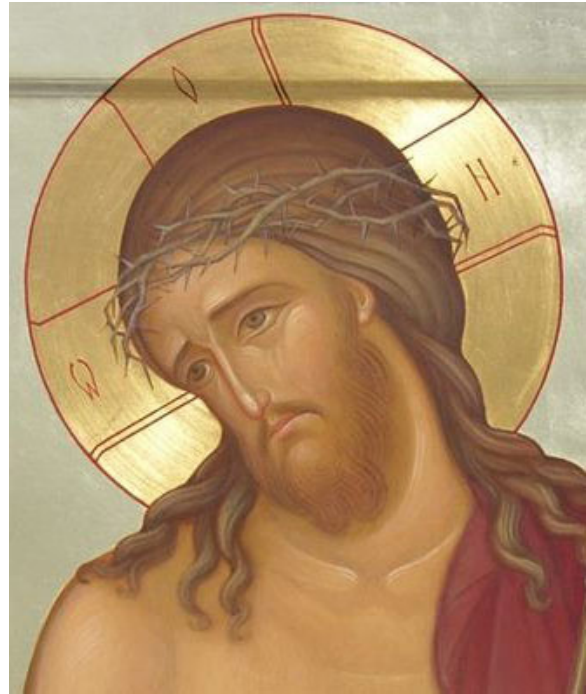
October 2016

Hello St. Thomas Aquinas Community!

The engineers have completed their efforts and my woodworker is constructing the cross. As soon as I receive it (within the next 10 days), I'll send a photo. As I wait, I've been studying the shapes and expressiveness in different Crucifixion paintings. What a variety!

The Crucifix below is a contemporary rendition (credit to the iconographer, whomever she or he may be). You can see similarities and differences to the Crucifix on the right, painted in the 13th century (Berlinghieri Crucifix).

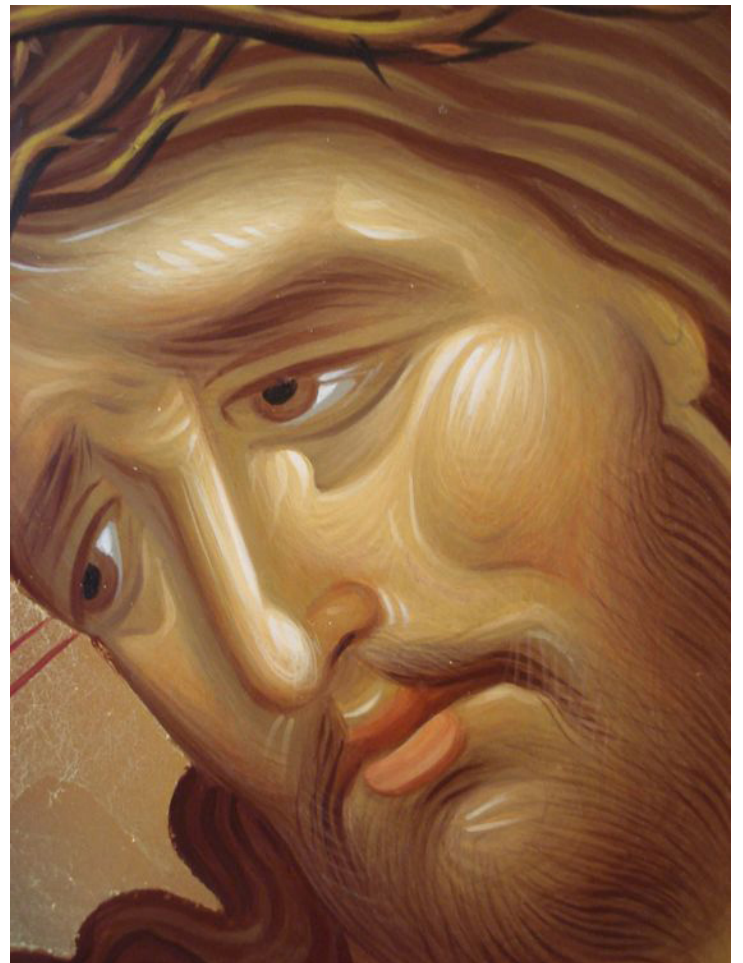




The Crucifix above is another contemporary image done by Giuliano Melzi. The upper right image shows a vulnerable expression, as does the image on the lower right. This is the Christ whom we long to see face to face.

As you can see, Christ's eyes can be open or closed. They can look at his Mother, or at the viewer. His hair can be brown or even red. A particular set of boundaries exists for a Crucifixion or Crucifix, but within the general rules there are many variations from which to choose.

As I work on the STA Crucifix, I factor in the tradition as well as the particular elements of the parish, the church, the STA community, and the particular time in which we live.



You are in my prayers.

Kathy Sievers